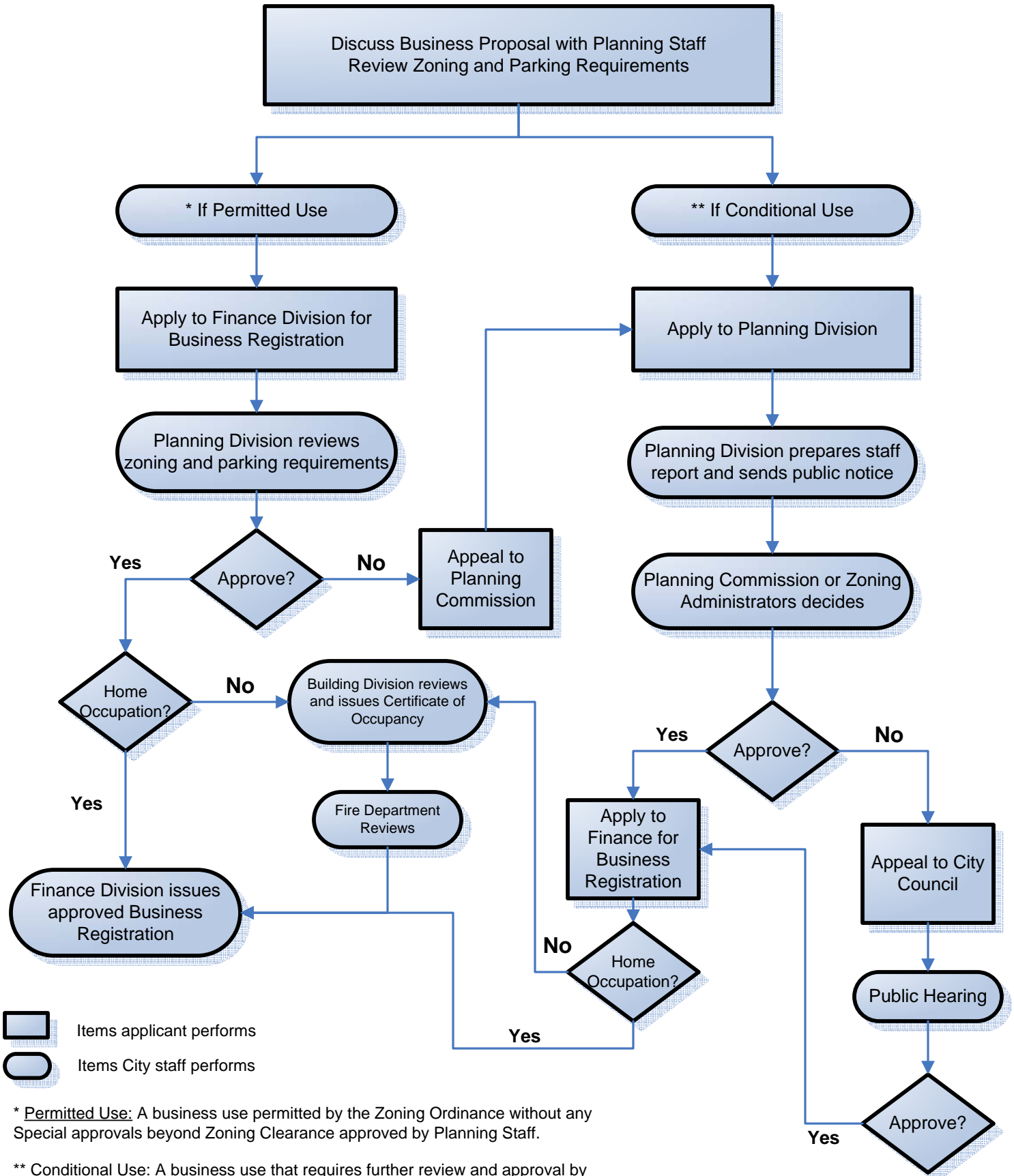


Business Registration Flow Chart



* **Permitted Use:** A business use permitted by the Zoning Ordinance without any Special approvals beyond Zoning Clearance approved by Planning Staff.

** **Conditional Use:** A business use that requires further review and approval by the Zoning Administrator or Planning Commission. These business types are listed as conditional uses in the Zoning Ordinance or as a use similar to a permitted use. The use permit may include certain conditions imposed by the Zoning Administrator or Planning Commission.

Questions?

Planning Division (650) 802-4263
 Building Division (650) 802-4261
 Finance Division (650) 802-4213